

# Your industrial real estate in Görlitz

## Business Park Görlitz

### Hagenwerder



#### Location:

Federal state of Saxony, Germany, municipality Hagenwerder/Görlitz

#### Classification:

GE (Commercial site)

#### Available Area:

In total 3,5 hectare

#### Local infrastructure:

established and partially developed (size limitation to ensure development)

#### Branch profile:

Machine and plant construction, Steel construction

#### Transport connection:

Motorway A4 / E40 at a distance of 17 km,  
B 6 Görlitz-Dresden at a distance of 15 km,  
B 115 Görlitz-Cottbus/Berlin at a distance of 16 km,  
Railway Siding available

#### Airport:

Dresden at a distance of 112 km,  
Görlitz Airport (not exceeding 5.7 T),  
Bautzen at a distance of 65.0 km

#### Municipal rates:

Business tax rates: 450%

Local rates A: 360%

Local rates B: 500

#### Purchase Price:

Price 11.00 € / m<sup>2</sup> where funding on behalf of the state is applicable

#### Subsidy funds:

Maximum investment funding is available

#### Proprietor:

City of Görlitz



**GÖRLITZ**  
ZGORZELEC  
EUROPASTADT

# First Draft Local Plan 2015

Böschung

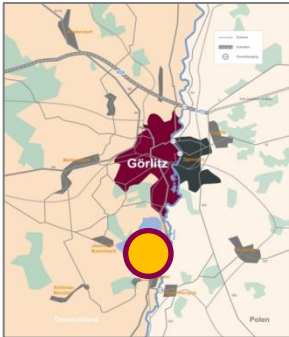
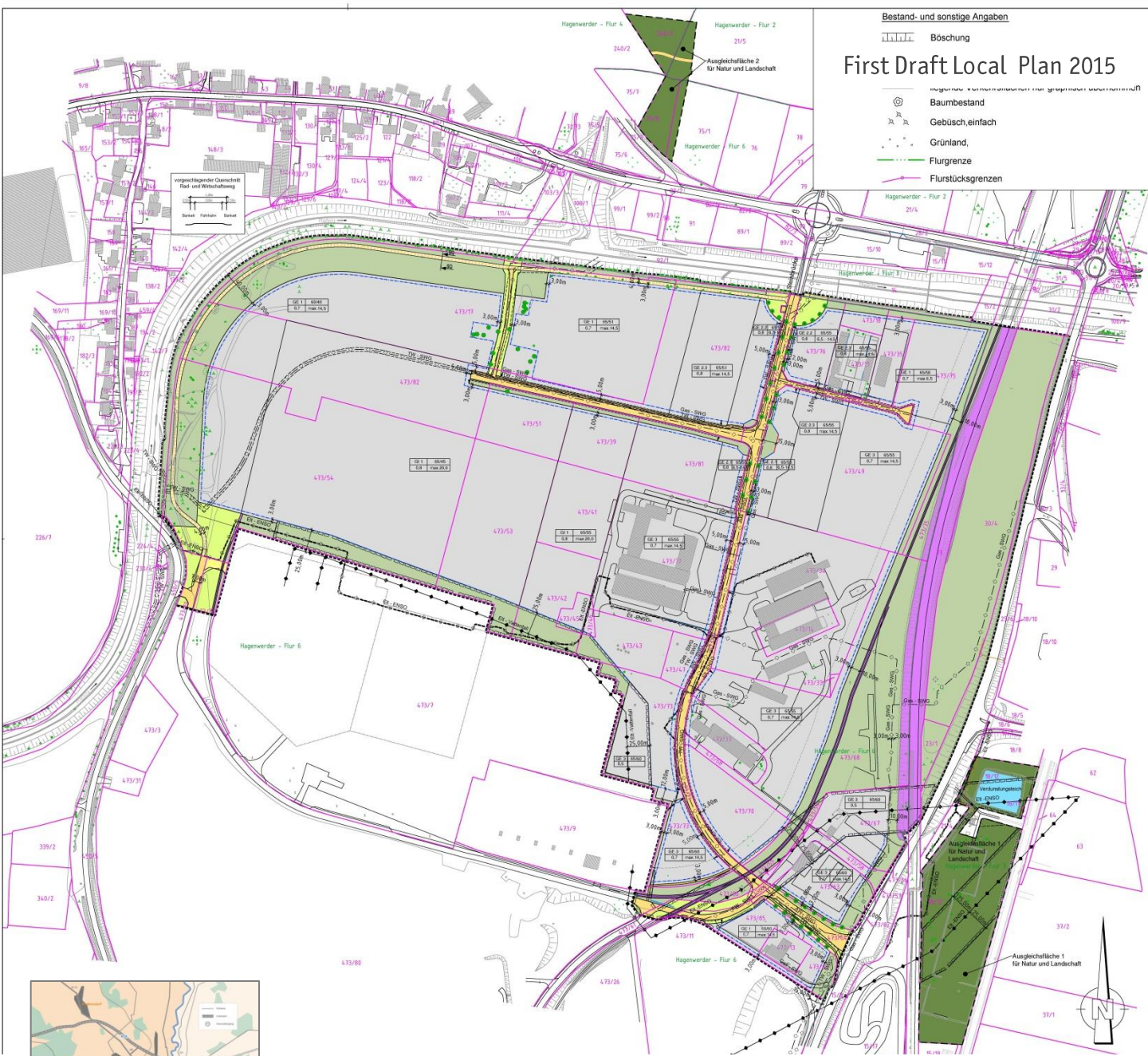
Bestand

Gebüsch,einfach

Grünland,

Flurgrenze

Flurstücksgrenzen



**Contact:**  
 Europastadt GörlitzZgorzelec GmbH  
 Fleischerstraße 19, 02826 Görlitz  
 Phone.: +49 (0) 3581 47 57 40  
 Fax: +49 (0) 3581 47 57 47  
 E-Mail: [wirtschaft@europastadt-goerlitz.de](mailto:wirtschaft@europastadt-goerlitz.de)  
 Internet: [www.goerlitz.de](http://www.goerlitz.de)

