

# Your industrial real estate in Görlitz

## Industriefläche Ebersbach



Fotos: A. Rönisch

### Location:

Federal state of Saxony, Germany, municipality,  
Directly connected to motorway

### Classification:

GI (Industrial site)

### Available Area:

GI: ca. 6 hectare gross

### Transport connection:

Motorway A4 / E40 at a distance of 0,5 km  
B6 Görlitz-Dresden at a distance of 0,2 km  
B115 nach Brandenburg at a distance of 0,5 km

### Border Crossing:

To Poland: Görlitz-Ludwigsdorf 1,0 km

### Railway:

Station Görlitz at a distance of 5,0 km

### Airport :

Airport Dresden International: 98 km  
Logistic-Airport Halle-Leipzig International: 220 km  
Rothenburg: 27 km

### Harbor:

Dresden Maritime: 102 km

### Local infrastructure:

fully developed

### Municipal rates:

Business tax rates: 450%  
Local rates A: 360%  
Local rates B:500%

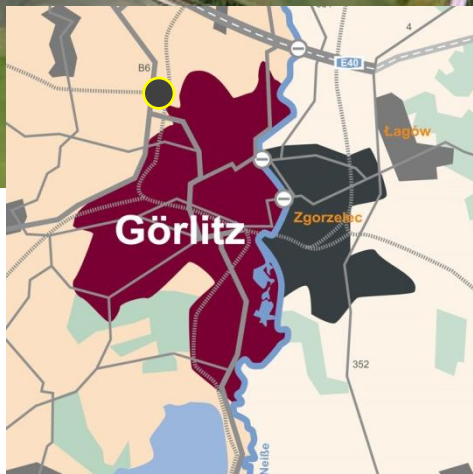
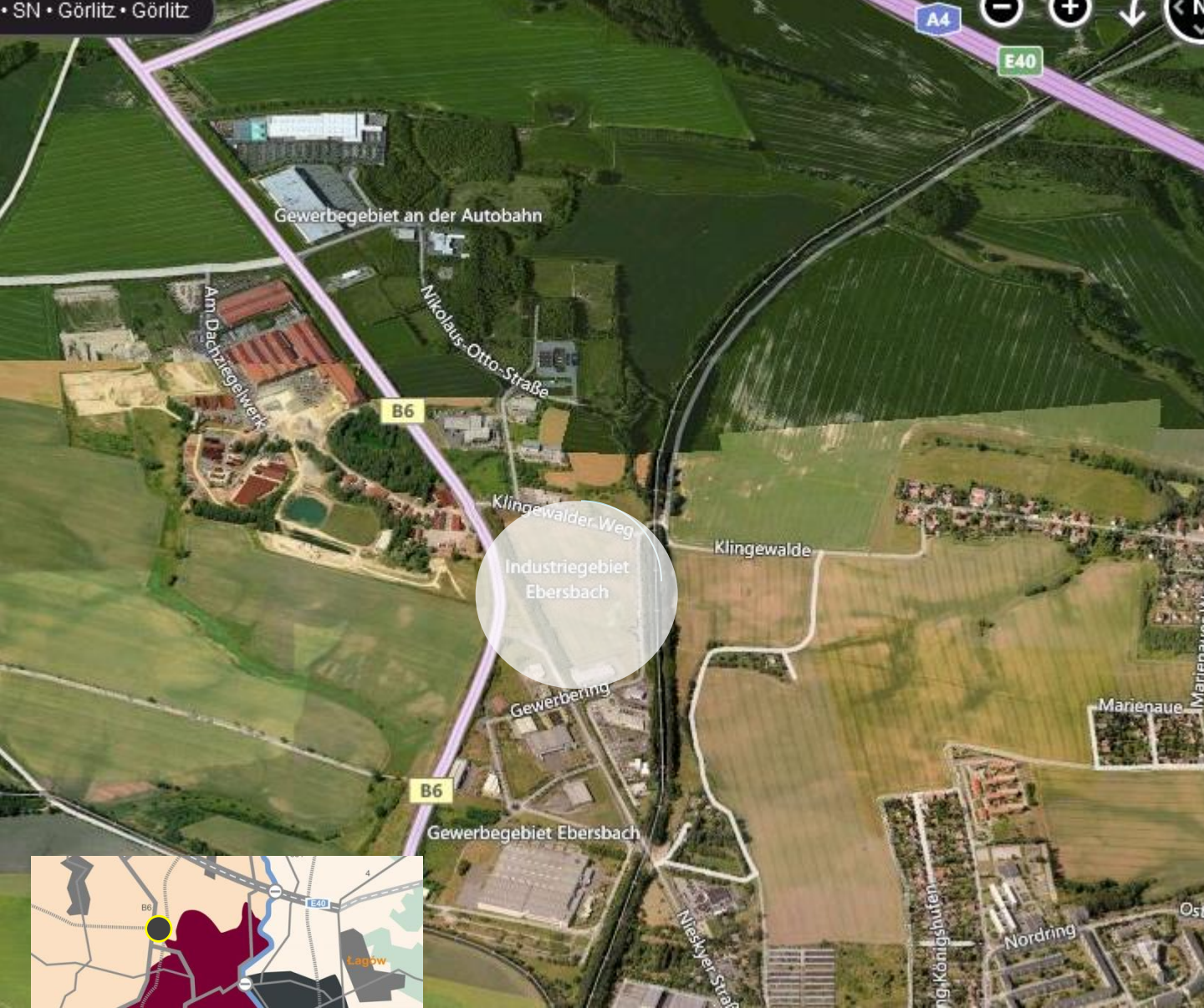
Purchase Price: negotiable

Owner: privat

April 2016



**GÖRLITZ**  
ZGORZELEC  
EUROPASTADT



Contact:

Europastadt GörlitzZgorzelec GmbH  
 Economic Development  
 Fleischerstraße 19, 02826 Görlitz  
 Tel.: +49 (0) 3581 47 57 40,  
 Fax: +49 (0) 3581 47 57 47  
 E-Mail: [wirtschaft@europastadt-goerlitz.de](mailto:wirtschaft@europastadt-goerlitz.de)  
 Internet: [www.goerlitz.de](http://www.goerlitz.de)



**GÖRLITZ**  
 ZGORZELEC  
 EUROPASTADT